



DESIGNER TURKEY  
ARCHITECTURE & CONSTRUCTION



GENSE LEVENT

# *The Spirit of* DESIGNER TURKEY

## *You Dream It, We Build It*

Location is everything. Turkish Mediterranean and Aegean coasts are still relatively virgin compared to other Mediterranean countries, therefore there are still plenty of options available in terms of land plots in idyllic locations, where one can be very creative with design and architecture.

Stamp your own personality at a perfect spot that ticks all the boxes. Relatively lower cost of land and construction also makes custom 'Design and Build' highly attainable.

CAMERON DEGGIN  
CEO





Designer Turkey's origin story began over 15 years ago when we started building custom homes for our Property Turkey clients whom weren't feeling completely satisfied with the resale markets in Istanbul and Turkey's coastline.

What began as a desire to completely take care of the needs of our valued client-partners, then evolved into a full-service custom 'Design and Build' operation. That growth and transition happened about as smooth and naturally as anyone could dream.

It really is no exaggeration when we say, "You Dream It. We Build It." Our true strength is in making things happen. We produce what you truly dream of, we won't simply sell you whatever is in stock.

This proposition extends to all scales of projects across the budget spectrum. There is no dream that is too big, or too small. Whether your dream is to build a house on a piece of private coastline, renovate that outdated kitchen, or just a cosmetic refresh, Designer Turkey will take care of you.

We can't wait to hand over your keys in the end.

# *Design and Build with* DESIGNER TURKEY



FIND  
THE LAND



DESIGN  
THE HOME



HIRE  
THE TEAM



OBTAIN  
THE PERMITS



BUILD  
THE HOUSE



STAGE THE  
PAYMENTS



HAND OVER  
THE KEYS



PROTECT YOUR  
INVESTMENT



MANAGE &  
MAINTAIN



# Renovate with DESIGNER TURKEY



REPLACE  
OLD SYSTEMS



REMODEL  
EXISTING HOME



REFURBISH  
OLD SPACE



RESTORE STRUC.  
DAMAGE



LANDSCAPE  
DESIGN



DISABILITY  
ACCESSIBILITY



EXTERIOR  
RESTORATION



AGING  
IN PLACE



CUSTOM  
NEEDS



GENERAL  
CONTRACTING



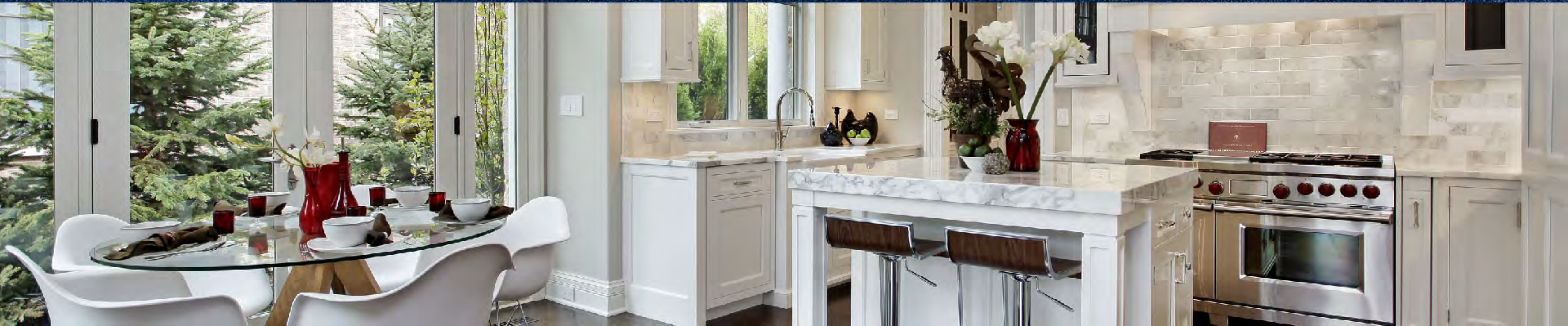
LEGAL &  
PERMITTING



BUDGET-SCALED  
SOLUTIONS



HAND OVER  
THE KEYS



# *Interior Design with* DESIGNER TURKEY



PERSONAL  
CONSULTATION



WORLD CLASS  
DESIGNERS



REMOTE  
COLLABORATION



CONCEPTUAL  
DESIGN



TECHNICAL  
ANALYSIS



INITIAL  
DRAWINGS



FLOOR PLANS  
& SETUP



BUDGET  
ALLOCATION



FINAL  
RENDERINGS



CONSTRUCTION  
& ENGINEERING



CUSTOM BUILT  
FURNITURE



EXCLUSIVE  
PARTNERSHIPS



DELIVERY &  
INSTALLATION



HAND OVER  
THE KEYS



*World Class Architecture with*  
**DESIGNER TURKEY × Saffet Kaya Architects**



*The Comfort of Home,  
with Monument DNA*

Saffet Kaya Bekiroğlu, is an internationally renowned architect. His previous stops included Zaha Hadid Architects and Frank O. Gehry & Associates.

As architect of many international designs he worked on projects on a spectrum of scales including several competition-winning projects such as the London Aquatics Centre for 2012 Olympic Games and the Heydar Aliyev Center in Baku on the bigger side. The latter of which Saffet is acknowledged as co-author.

**SAFFET KAYA BEKIROĞLU**  
M.Arch [Hons], B.Arch, ARB, RIBA



**SKA**



DESIGNER TURKEY

# SENSE

LEVENT

Located in Kagithane area of Istanbul, these Sense Levent properties have been strategically placed in an area that has huge growth potential.

Facilities include a huge 700m<sup>2</sup> Sky Lounge and Terrace. Other on-site amenities include a gym with top quality machines for working out and underground parking spaces allocated to each apartment.

Throughout the project, unique durable architecture and evergreen plants are incorporated together in a sustainable manner to create beautiful designs and apartments that are a privilege to live in. These residences meet the criteria for Turkish Citizenship by Investment applications.

## LOCATION

*Kagithane, Istanbul,  
Turkey*

## ARCHITECTUAL STYLE

*Modern Luxury*

## BUILDING DETAILS

- *1+1 starting at 54m<sup>2</sup>*
- *2+1 starting at 119m<sup>2</sup>*
- *Private Swimming Pool*

DESIGNER  
TURKEY



DESIGNER TURKEY

# SENSE

U-HOUSE

This project consists of three detached villas in the village of Gumusluk. Designed and built to high luxury standards, this is a unique opportunity to purchase one of our 'U' shaped homes. The bases are built with stone, while the rest consists of glass and steel in a fusion of authentic and contemporary architecture.

Outside, the garden is spacious and immaculately landscaped with pretty trees and amazing greenery, providing a complete feeling of serenity and peace.

One of the most bohemian and relaxed areas for year round living in Bodrum, Gumusluk is full of character and charm enticing those who live in Gumusluk to fall in love instantly with the surroundings.

## LOCATION

*Gümüşlük Village,  
Bodrum, Turkey*

## ARCHITECTUAL STYLE

*Open-Air Contemporary*

## BUILDING DETAILS

*Land Area: 1000m<sup>2</sup>*

*Living Area: 250m<sup>2</sup>*

*Bedrooms: 4*

*Bathrooms: 5*

*Private Swimming Pool*

DESIGNER  
TURKEY



DESIGNER TURKEY

# SENSE

L-HOUSE

Looking directly out across the Bay and Greek Island –wherever you are within the home, the view is simply out of this world and unobstructed. This is one of the most contemporary houses in Gumusluk, nestled in a residential area within minutes to amenities.

The house enters via the mid-section directly into the living area with lounge to one side, dining table in the middle, and designer kitchen to the other side. Floor-to-ceiling glass offers an outstanding sea panorama from all corners, and wow factor as soon as you enter the villa.

Leaving the house, an oversized swimming pool that has an infinity edge with the sea views merging with the pool water in a mixture of blues is waiting.

## LOCATION

*Gümüşlük Village,  
Bodrum, Turkey*

## ARCHITECTURAL STYLE

*Open-Plan Contemporary*

## BUILDING DETAILS

*Land Area: 1000m<sup>2</sup>*

*Living Area: 280m<sup>2</sup>*

*Bedrooms: 5*

*Bathrooms: 5*

*Private Swimming Pool*

DESIGNER  
TURKEY



DR

# Bosphorus Heights

This project was all about show stopping. Bursting with luxury, but also with intimate spaces. This isn't luxury for the sake of flaunting money. This is luxury spent with world-class taste, with function in mind.

It has a beautiful pool area with adjoining outdoor living and dining cabanas. It has a beautifully terraced entry way opening up to a museum quality display upon arrival. This really shows the breathe and the weight that Designer Turkey is capable of. They really do bring any dream our clients have to life. Pushing the boundaries of what is possible for residential environment, only to be contained by the membrane of the human imagination.

## LOCATION

*Sariyer, Istanbul,  
Turkey*

## ARCHITECTUAL STYLE

*Showstopping Architec-  
tural Villa*

## BUILDING DETAILS

*Private Swimming Pool  
Elevator  
Exterior Cabanas  
Terraced Landscaped  
Estate*

DESIGNER  
TURKEY



DR

# Crown Bomonti

In the center of Istanbul, this beautiful penthouse over looks the magical city through floor-to-ceiling windows, filling the unit with natural sunlight all through the day.

Spaces accented with concrete emanate a contemporary aesthetic, encapsulating the industrial vibe, and gives an urban feel to the space. Mixing textures and materials such as glass, mirrors, and neutral colors; to the grainy neutral hues of concrete, softens the rigid and bare ambiance it tends to create.

The location offers you the ultimate lifestyle package in one of Istanbul's most exciting areas. With endless opportunities for recreation, just a short distance from Taksim, the Bosphorus and Nisantasi, and best of all, Bomonti is one of the most exciting areas of the city.

## LOCATION

*Bomonti, Istanbul,  
Turkey*

## ARCHITECTUAL STYLE

*Brutalist Architecture*

## BUILDING DETAILS

*Land Area: 10,000m<sup>2</sup>*

*Living Area: 200m<sup>2</sup>*

*Bedrooms: 3*

*Bathrooms: 2*

*Shared Swimming Pool*

DESIGNER  
TURKEY



# DR H.S Home

Our clients chose an incomplete, or shell, house because they did not want to waste time on building a house completely from the ground up as that would take up more time than they are willing to spend on building their new home in Turkey.

Complete with Turkish Baths, a sauna, private swimming pool, and more this estate exudes the rush of Mediterranean modern luxury. The spaces are all open plan, which creates fresh viewing angles each time one exists in the space. The subtle, expert lighting features bath the rooms in natural light and artificial fills, creating an unforgettable experience. Each room showcases the cleanliness and beauty of the materials on display. A perfect indoor retreat just outside one of the world's largest metropolitan centers.

## LOCATION

*Büyükdere,  
İstanbul, Turkey*

## ARCHITECTURAL STYLE

*Modern Luxury*

## BUILDING DETAILS

*Living Area: 919m<sup>2</sup>*

*Rooms: 5*

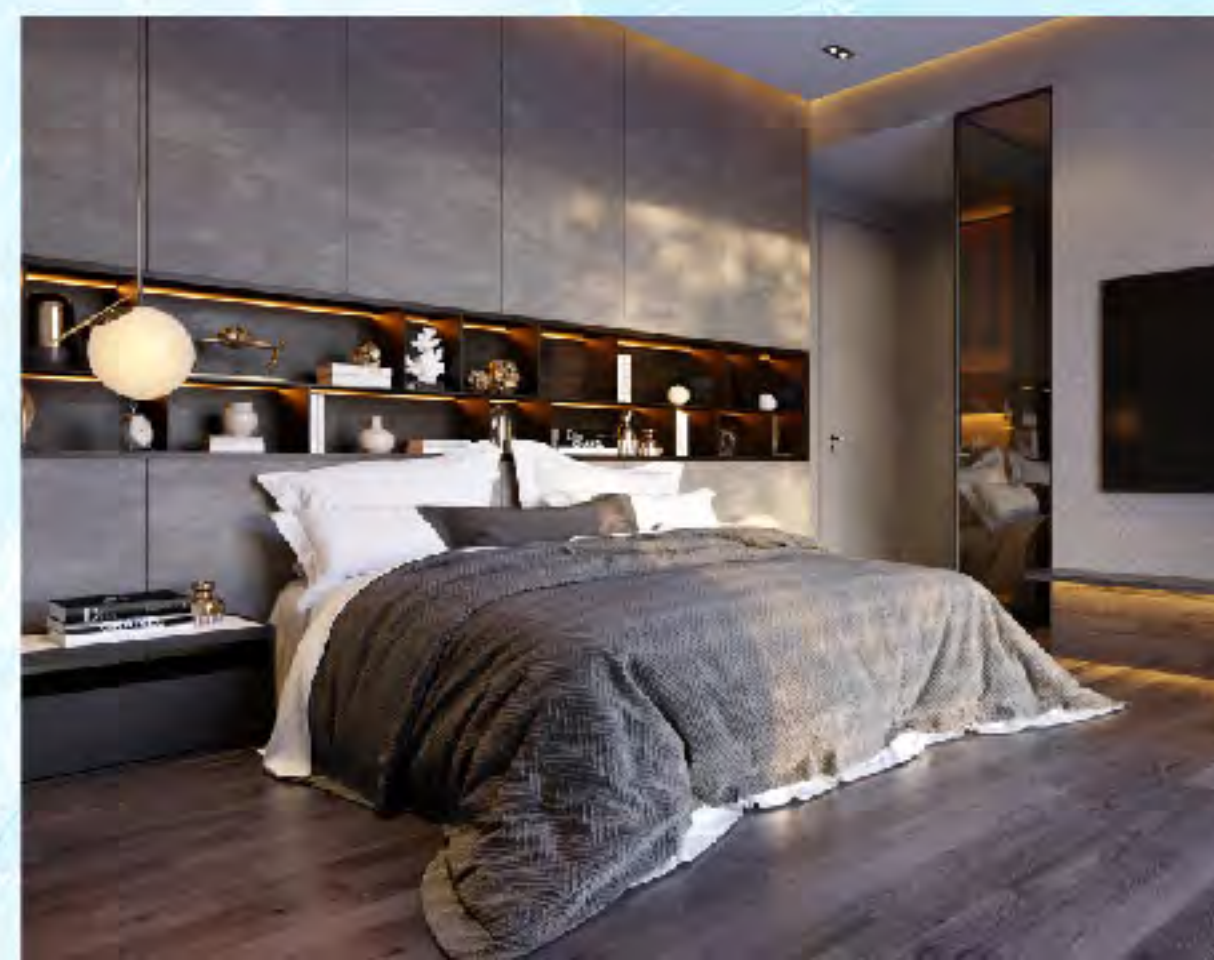
*Private Swimming Pool*

*Sauna*

*Turkish Hamam*

*Gazebo*

DESIGNER  
TURKEY



DR

# Frame House

The project, located near Büyükçekmece lake, has a relaxed, beautiful atmosphere, reminiscent of a European village. Inspired by this atmosphere, our designers found it best to compliment the space with the senses of the sea inside the house.

The large windows overlooking the sea side, and the double height floor, frame the beautiful view as a magnificent art piece.

By dividing the mass into 2 parts connected by a bridge, as the pool area extends into the house creating a true indoor-outdoor lifestyle. More than just a pool, the luxurious infinity pool area is a destination resort unto itself, featuring a floating garden and infinity edge.

## LOCATION

*Büyükçekmece,  
İstanbul, Turkey*

## ARCHITECTURAL STYLE

*Ultra Modern*

## BUILDING DETAILS

*Land Area: 1,520m<sup>2</sup>*

*Rooms: 7*

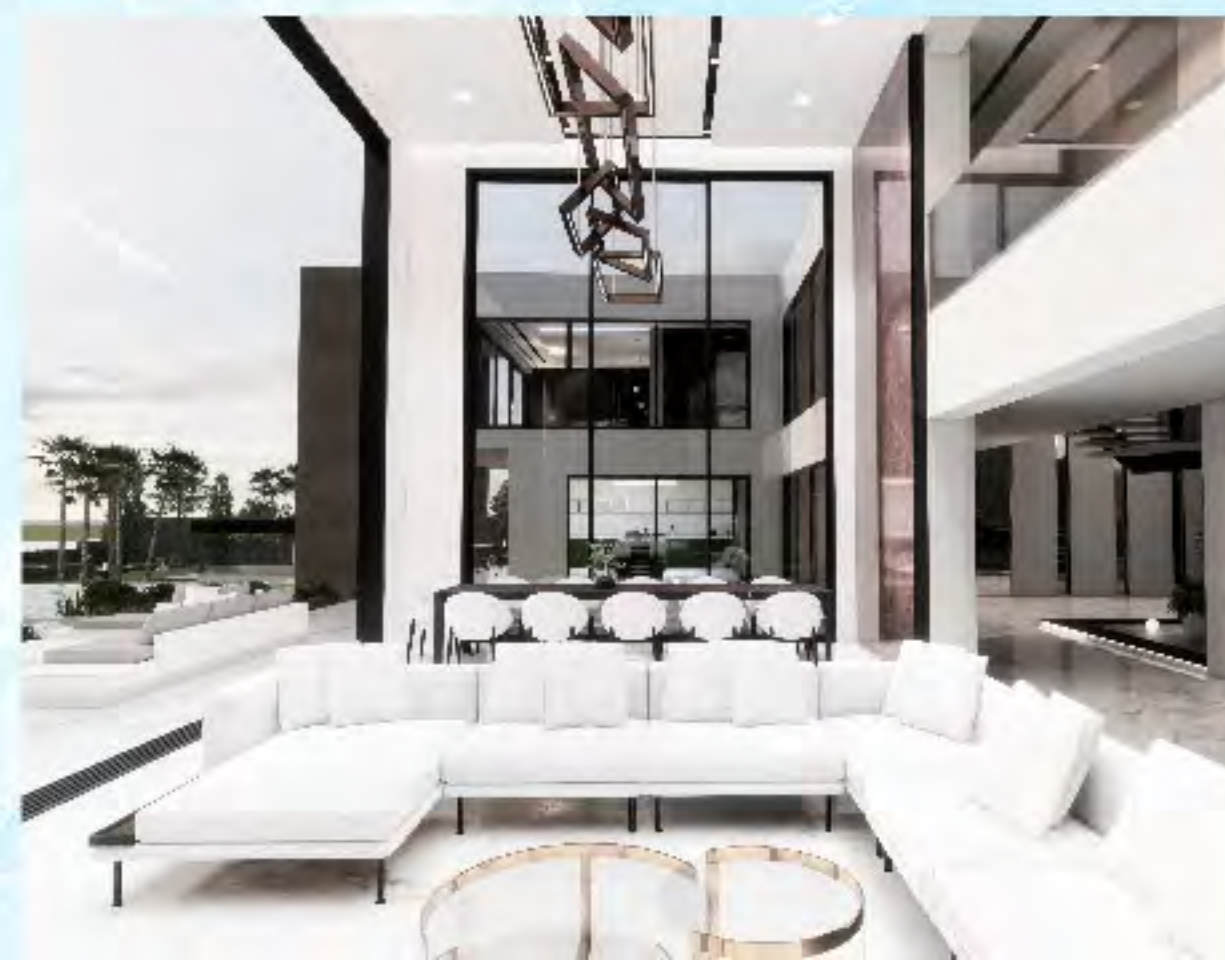
*Private Swimming Pool*

*Open Air Gym*

*Open Air Cinema*

*Fireplace*

DESIGNER  
TURKEY





DESIGNER-TURKEY.com



Designer Turkey



DesignerTurkeyCom



info@Designer-Turkey.com



+90 850 532 51 95